



C-Channel (with diffuser)



W-Channel



J-Channel

Lighting Channels

CHANNEL STYLE

C-Channel



C-channels are used for under-shelf lighting, as they protect the LED strip and adhere easily to the shelf. C-channels are applied using adhesive, magnets or clips and are recommended for use in permanent/semi-permanent locations.

FEATURES

Option to apply a light diffuser to C-Channel light strips.

Low-profile, lightweight, aluminum channel.

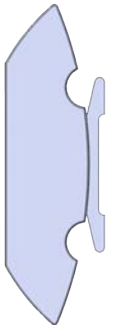
Durable LED strip stands up to abuse in retail environment.

Cord strain relief built into channel design.

COLORS

- Black** with black cord 
- Silver** with white cord 
- Almond** with almond cord 

W-Channel *Patented



W-channels are used in applications such as peg merchandising, canopy lighting, and pushers that stand out in front or above products to shine light up and/or down on the product. In the case of canopy or peg application, W-channels are paired with brackets to hold the channel to the shelving wall.

Patented "W" shape reflects light back toward the product.

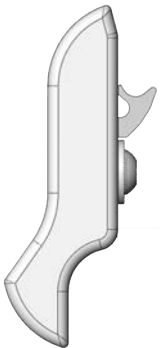
Can be built with up lighting, down lighting or both.

Caps on both ends provide cord strain relief and a clean finish.

Robust extrusion allows mounting on the front face of fixtures.

- Black** with black cord 
- Almond** with almond cord 

J-Channel *Patent Pending



Our J-channels affix to the front of the standard shelving and are used to shine up lighting, down lighting or both on products. Compared to C-channels, J-channel lighting can be applied without adhesive or magnets, making it easier to move and/or adjust lighting as needed.

Two stainless steel cams inside channel allow for quarter-turn install and removal.

Front contour duplicates existing pricing channel with no loss of marketing space.

Unique shape reflects light back toward product.

Can be built with up lighting, down lighting or both.

- Black** with black cord 
- Almond** with almond cord 