



# Refreshment Zone/Queue Line LED Merchandising Look Book

LIGHTING FOR **IMPACT**



## Watch your sales grow with our made-for-retail LED lighting solutions...

Anytime is the right time to captivate shoppers and elevate their experience in your store — especially when shoppers “reward” themselves for a job well done.

If you have a queue line or refreshment zone to manage checkout and front of store traffic, you’ll watch your sales grow by adding our innovative, affordable, made-for-retail merchandising solutions.

With more than 60,000 installations across North America, top retailers rely on our proven lighting systems to foster greater dwell time, grow basket share, and make that crucial best “last impression” on their customers. Contact us today to learn more!



BEFORE



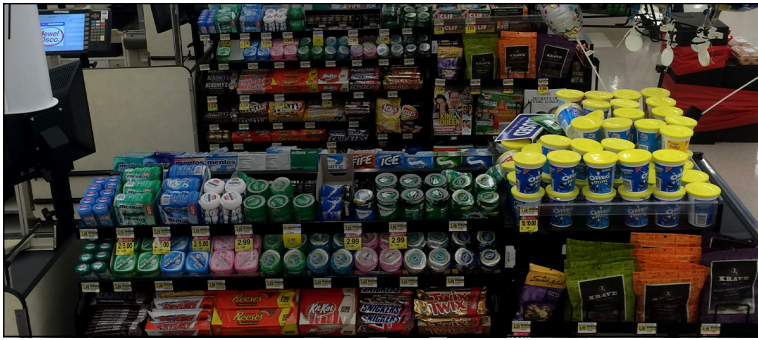
AFTER



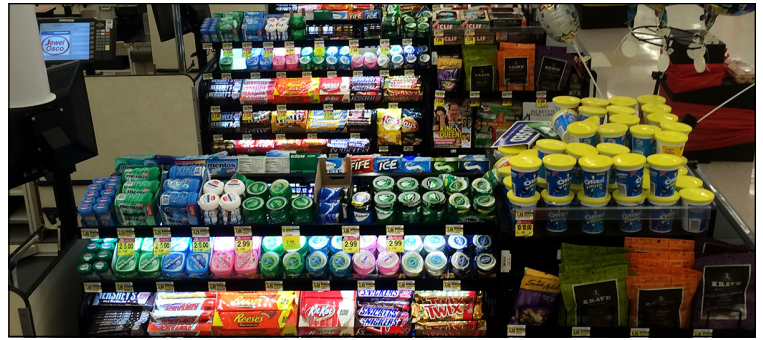








BEFORE



AFTER









Research has shown customers select twice as many items from shelving with integrated lighting, than those with none.

— LUXREVIEW

serving Bowie since 1969

express

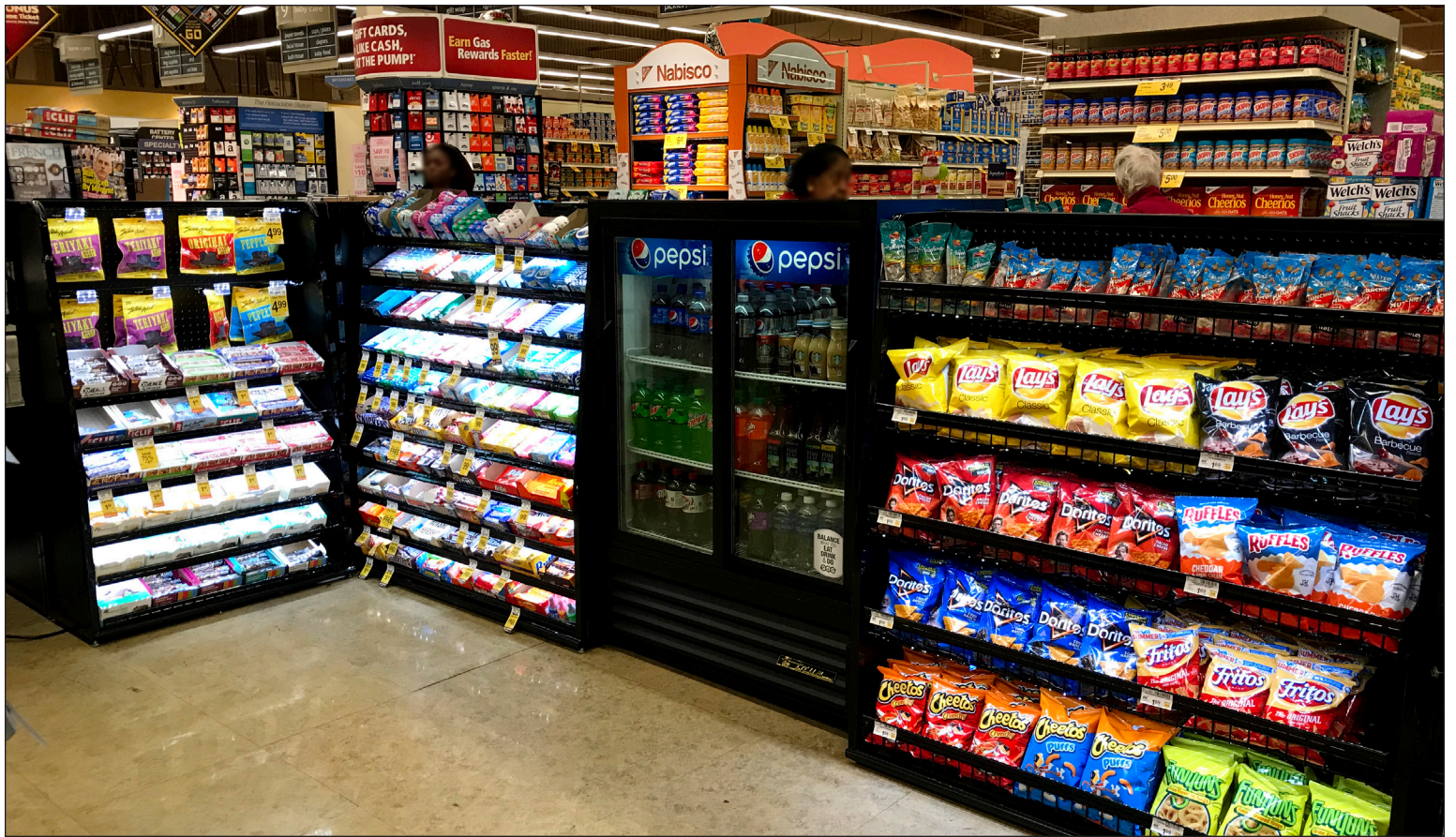
15 item limit

express

15 item limit

express

15 item limit



“Retail lighting is all about the psychology and sociology of lighting design, and if it’s done well, a retailer will be able to see this in their bottom line.”

Paul Nulty, Lighting Designer, Founder of Nulty









# TO GO



# SNACK



# REFRESH

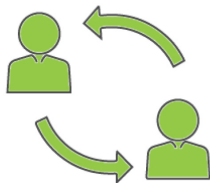






# The Six Lighting for Impact Advantages

With more than 30 years serving the retail industry, we're experts in designing and implementing LED lighting solutions. We're passionate about innovating and offering top-quality products designed to elevate the shopper experience and store environment. Our team consists of both merchandising and engineering pros to help you from start to finish in-store. We'll do it all for you!



## Custom Design Consultations

Tell us your vision and we'll do the design layout for you. Layouts feature LED options — including type, intensity, and color.. We'll share examples with you.



## Quick Customized Quotes

Quote turnaround time is within an industry-leading 2-3 days. Your quote requests can be sent as pictures, engineering drawings, phone calls, floor plans, and more.



## Value Engineered Systems

We design to maximize output while minimizing components. Our approach adds value and lowers overall costs, offering a big savings compared to competitive systems.



## In-Stock Inventory

Our large on-hand inventory is ready to ship — offering a wide range of components to meet your needs without the wait.



## Fast Delivery

We offer an industry leading 2-week lead time on most orders, and expedited processing is available upon request.



## Expert Installation

Our national network of reliable installation professionals have you covered — managing the in-store installation process start to finish.



Affordable. Simple. Dramatic. Effective.

There's never a good reason to delay success... Now's the perfect time to integrate our easy-to-install LED lighting into your Refreshment Zones and Queue Line displays. Contact us to request a quote today!

Scan to download our LED Merchandising Solutions catalog.

Lighting for Impact  
3201 S. 6th Street  
Lincoln, NE 68502

844.218.4112  
www.lightingforimpact.com



LIGHTING FOR **IMPACT**