



Wall Washer LED Solutions for Retail Look Book

LIGHTING FOR **IMPACT**



Drive higher sales performance with our Wall Washer LED solutions...

Our lighting is routinely proven to command attention and grow sales for assortments on the *shelf* — so *why not apply the same science to wall systems and other difficult-to-light displays?* With Lighting for Impact's made-for-retail display lighting, you can easily transform how your customers see, shop, and spend in *your* store!

We've developed two, easy-install solutions; our Wall Washer — *Standard* and *High Output* lighting bars. In addition, four available mounting options offer complete versatility in design and application.



BEFORE  **AFTER**



Wall Washer — Standard

Our Wall Washer — *Standard* is ideal for lighting a distance up to 4 feet, and can be connected in a series of up to 4 from a single power supply.



Wall Washer — High Output

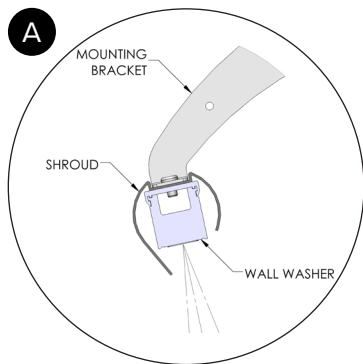
Our Wall Washer — *High Output* illuminates up to 8+ feet, and can be connected in-series up to 7 units from a single power driver.

Call us at **844.218.4112** anytime to ask questions.

Ultimate Flexibility: 4 Wall Washer Mounting Options

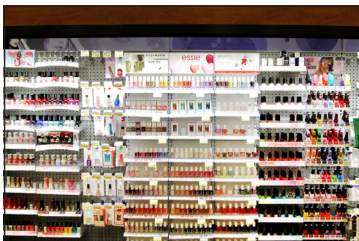
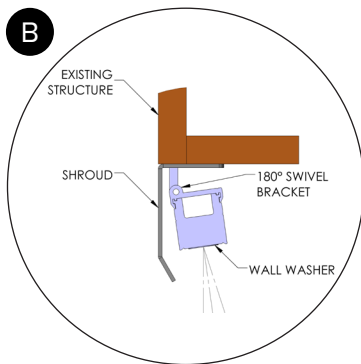
While the Wall Washer — *Standard* features it's own 180° swivel mounting bracket, the *High Output* unit can be mounted four different ways — offering the ultimate in design flexibility. (Depending on your solution, refer to Sections A-D for examples of mounting options.)

Stand-Alone Shroud



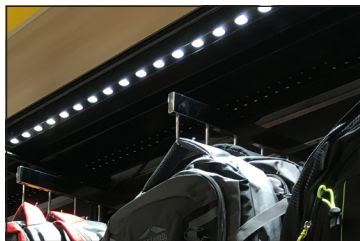
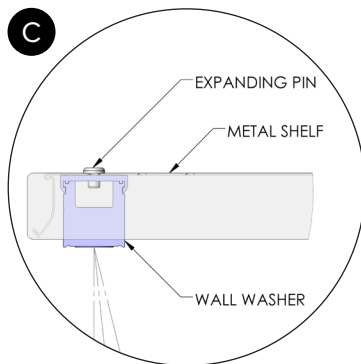
Bracket and shroud mounting uses universal brackets to attach unit to fixture via standard uprights.

Existing Structure



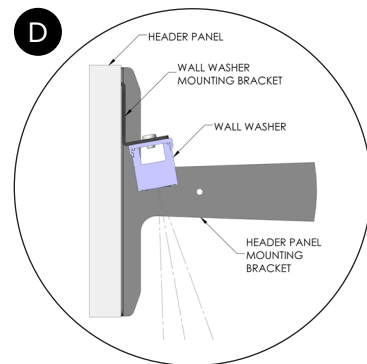
Mounts directly to existing facade via provided screws and features 180° swiveling for precise positioning.

Metal Shelf



Pin mounting uses existing hole pattern in shelf to attach unit with expanding pin.

Backlit Header Panel



Header panel clip mounting uses two brackets to attach unit to back of backlit header panel.



High Output
Mounting Solution: **A**



High Output
Mounting Solution: **B**

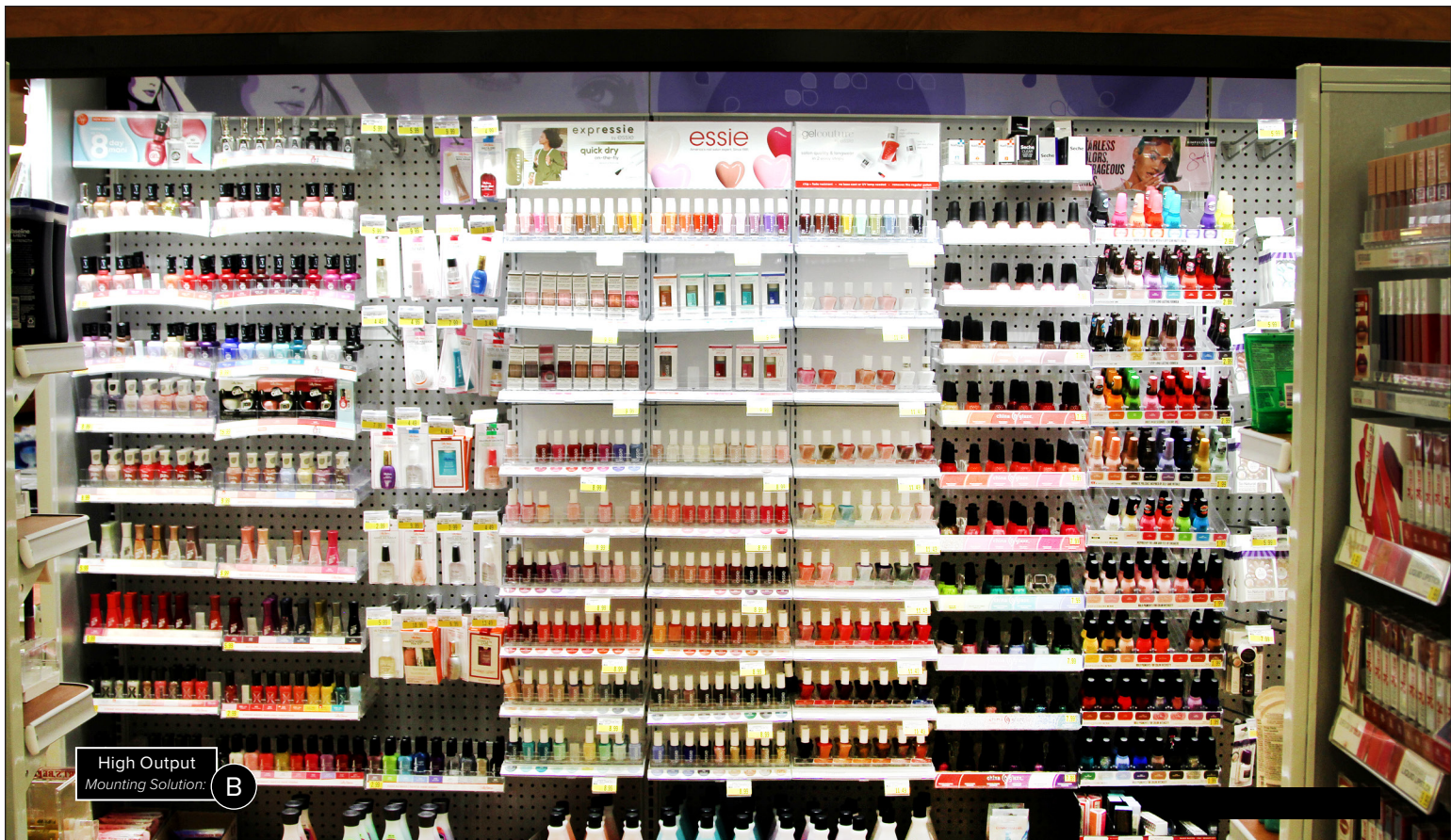
High Output
Mounting Solution: C





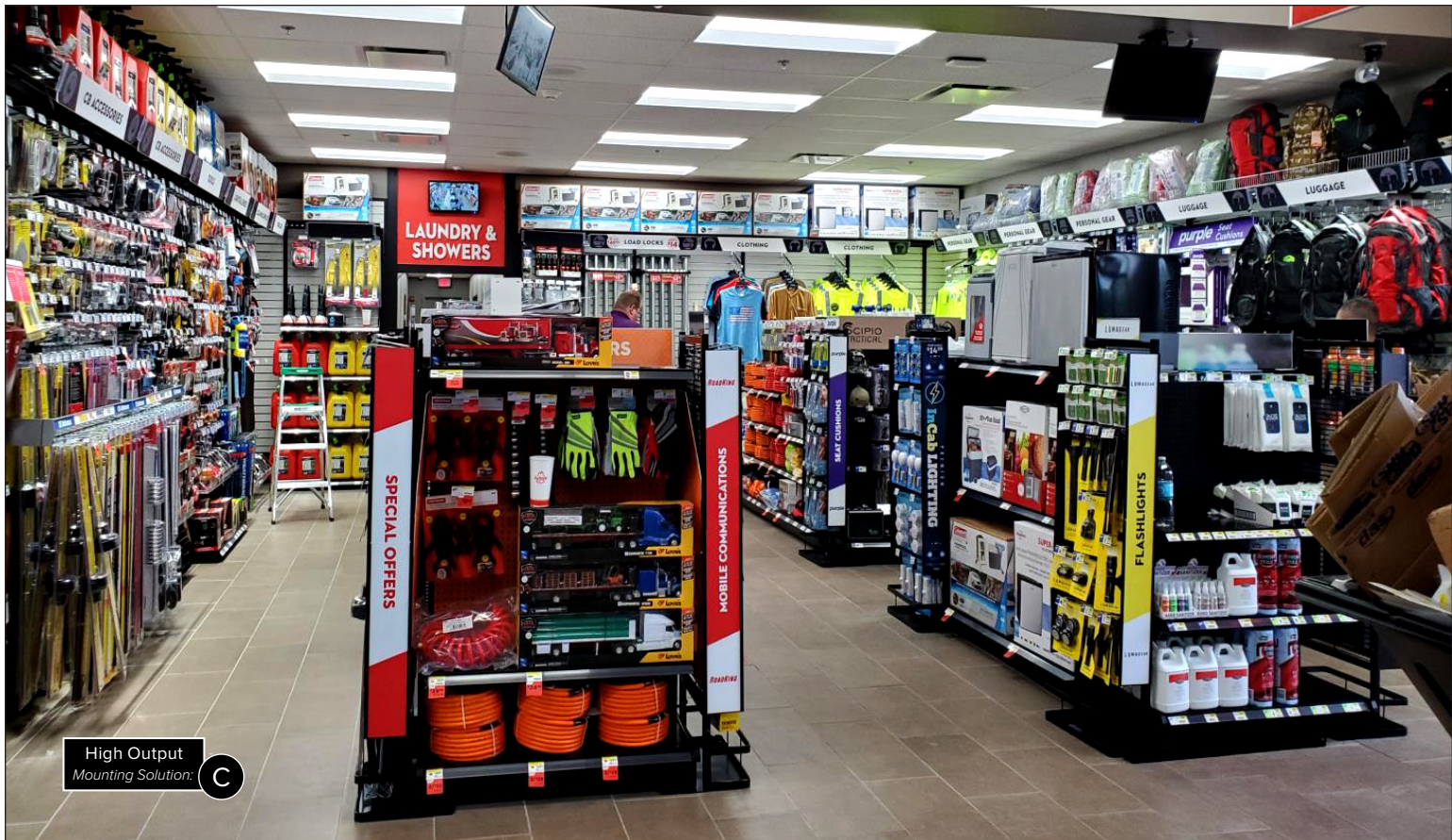
High Output
Mounting Solution:

D



High Output
Mounting Solution:

B



High Output
Mounting Solution.



BATH ESSENTIALS

COT

High Output
Mounting Solution:

D





Standard Output
Included 180° swivel mount

Smart Solutions for professional drivers

- Advanced connected-truck device
- Award-winning truck navigation
- Premium headphones & headsets
- High-resolution dash cams
- Wide range of accessories

The Six Lighting for Impact Advantages

With more than 30 years serving the retail industry, we're experts in designing and implementing LED lighting solutions. We're passionate about innovating and offering top-quality products designed to elevate the shopper experience and store environment. Our team consists of both merchandising and engineering pros to help you from start to finish in-store. We'll do it all for you!



Custom Design Consultations

Tell us your vision and we'll do the design layout for you. Layouts feature LED options — including type, intensity, and color recommendations.



Quick Customized Quotes

Quote turnaround time is within an industry-leading 2-3 days. Your quote requests can be sent as pictures, engineering drawings, calls, floor plans.



Value Engineered LED Systems

We design to maximize output while minimizing components. Our approach adds value and lowers overall costs.



In-Stock Inventory

Our large on-hand inventory is ready to ship — offering a wide range of components to meet your needs without the wait.



Fast Delivery

We offer an industry leading 2-week lead time on most orders, and expedited processing is available upon request.



Expert Installation

Our national network of reliable installation professionals have you covered — managing the in-store installation process start to finish.



Standard Output
Included 180° swivel mount

Affordable. Simple. Dramatic. Effective.

There's never a good reason to delay success... Now's the perfect time to integrate LED lighting into your wall systems and open air merchandising displays. Contact us to request a quote, or to discuss your merchandising projects today!

Scan to download our full LED Merchandising Solutions catalog.



Lighting for Impact
3201 S. 6th Street
Lincoln, NE 68502

844.218.4112
www.lightingforimpact.com



LIGHTING FOR **IMPACT**